



## **Springfield Soaring Championship**

**Presented by Canterbury Gliding Club  
19 November – 26 November 2022**

**Practice Day: Saturday 19 November**

**Further information [canterburyglidingclub.nz/contest/](http://canterburyglidingclub.nz/contest/)**

### **Sponsors:**

SELWYN DISTRICT COUNCIL

PRIMA DELI CATERING

MCCAWE PHOTOGRAPHY

SHEFFIELD WORLD FAMOUS PIE SHOP

## OPERATIONAL BRIEFING AND GENERAL INFORMATION FROM COMPETITION DIRECTOR WELCOME

On behalf of the, President of Canterbury Gliding Club, and the Organising Committee, welcome to all pilots, crew, families and friends to our place, here at Springfield, for the Springfield Soaring Championship.

This soaring championship will be organised on the rules of an Enterprise competition, the primary aim of an Enterprise style competition being to maximise the day, making the most of all types of lift whilst exploring our place and to generally encourage an 'enterprising' approach to your day's competitive flying. (See *Guidelines* document)

We will provide a "safe, competitive and fair" environment to challenge both those pilots new to competition and for the more experienced competitor.

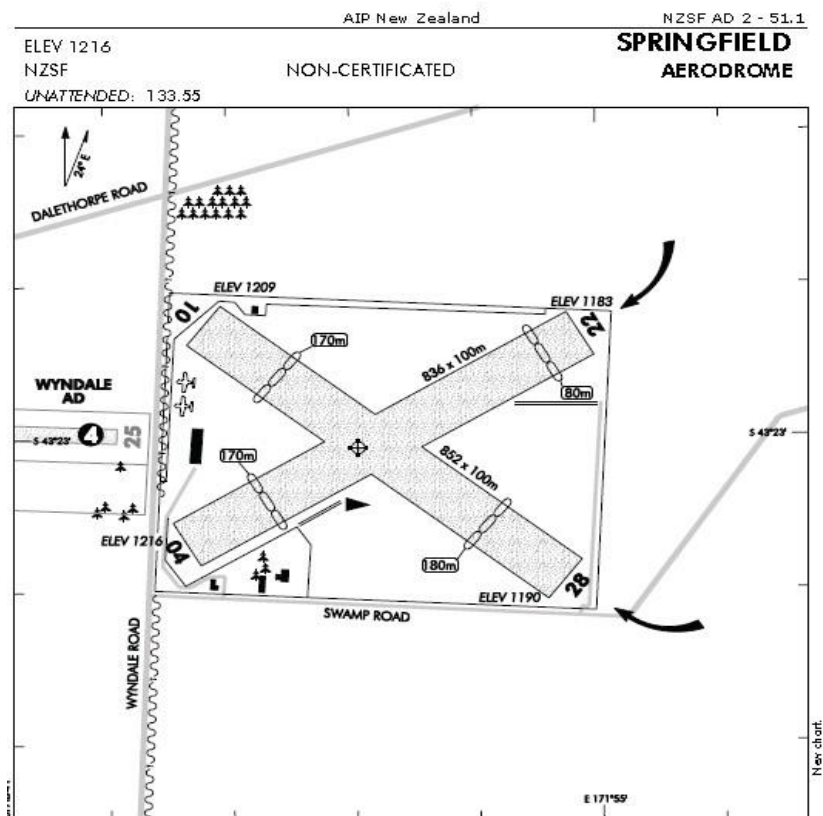
Spectacular sponsorship from, Prima Deli Catering (aka Derek Kraak) Selwyn District Council, and Sheffield World famous pies, who we thank for their generous support.

### ORGANISING TEAM

<b>Competition Convenor</b>	Derek Kraak	027 432 9366
<b>Competition Director</b>	Richard Johnson	<a href="mailto:rjohnson@cwallp.org.uk">rjohnson@cwallp.org.uk</a>
<b>Task Setters</b>		
<b>Weather</b>		
<b>Scorer</b>		
<b>Adjudicator</b>	Nigel Ackroyd	
<b>Safety Officer</b>	Peter Taylor	021 066 9886
<b>Chief Tow Pilot</b>		
<b>Duty Pilots</b>		
<b>Base Radio and Retrieves</b>	Duty pilot	021 208 4634
<b>Ground control and grid</b>	Nigel Ackroyd	
<b>CGC bunkhouse accommodation</b>	Sandy Yong	Sandy.m.yong@gmail.com
<b>CGC camping</b>	Kevin Bethwaite	Kevin.bethwaite@gmail.com



GPS co-ordinates **Lat:** 43°22.915 **Long:** 171°54.82E  
 Address: 386 Swamp Road, Russells Flat Springfield



1. Circuit: RWY 04/10 — Left hand  
 RWY 22/28 — Right hand
2. **CAUTION:** Winch launching of gliders with wire launches up to 2000ft AGL.
3. Rising ground 0.7NM from aerodrome to NW, SW and S.
4. **CAUTION:** Wyndale AD adjacent to west. Possible concurrent activity.
5. Noise abatement — power aircraft operations are limited to aircraft in direct support of the gliding operation. Power aircraft should avoid low level circuits and make minimum power approaches where possible.
6. **CAUTION:** Powerlines on Wyndale Rd near RWY 10 THR.

## LAND OUT INSTRUCTIONS

**Before you land out**, broadcast your intentions "All stations ..." You may not have radio or cell phone coverage on the ground.

- After landing out, contact RETRIEVE PHONE 021 208 4634
- If no contact, try texting and radio blind broadcast.
- Advise position lat/long. Use SAR chart.
- Advise condition of personnel and glider. If injured, activate PLB.
- Use Landout Survival Pack.
- Contact landowner, worker or Manager for permission to retrieve.
- Take the PLB with you.

### Retrieve Crew

- Take a photo of Land out Guidelines.
- If injury is suspected, take First Aid kit; portable radio, phone.
- Buy the landowner a thank you pack (beer/wine)
- Ensure permission is given. Follow their instructions re gates, crops, hazards, glider security.
- You may have to follow fence lines in crop paddocks and/or carry out the glider.

### After Retrieve

- Thank the landowner, leave a gift pack.
- Clean up area.
- Report any damage to property and advise restoration required.

**Land out contacts close to Springfield are shown on separate map in the Briefing Room. Take a photo on your phone.**

- **Brooksdale:** Stu Gunn 027 6511422 or Hamish 027 3583809  
Homestead 03 318 4748 Cottage 03 318 4171  
Go to Red Cottage, sign in/out. Retrieve.
- **Annavale:** Reece 027 4418015 - Mel 027 3567070 - Aaron 027 86288983
- **Arydale** Graham Dawson 03 318 4836 or 027 6543422

**Other landouts** are described in detail on [canterburyglidingclub.nz/landoutguide/](http://canterburyglidingclub.nz/landoutguide/) under the Resources tab. Details can be found for the following: -

L125 Craigieburn Rd	L126 Craigieburn Station
L136 Grassmere Rd Junction	L140 Woodlands
L141 Lyndon	L144 Castle
L145 Flock Hill	

## AIRSPACE

Pilots will be advised at the morning briefing, of airspace opening and closing.

A NOTAM has been issued for the duration of the competition.

Airspace boundaries are shown on chart given to each glider.

## AIRFIELD WEBCAM

[Canterburyglidingclub.nz/weather-cam/](http://Canterburyglidingclub.nz/weather-cam/)

Displays of last hour on webcam and Springfield wind, temp, pressure for airfield and Springfield ridge (Holfoy system). Updated every 15 mins.

Springfield Airfield Wind direction **Magnetic**. Springfield Ridge Wind direction **True**.

## GNZ RULES

It is a GNZ requirement that pilots should be provided with operational briefing notes and that pilots are to attend the briefing at 10am each competition day.

## RADIO FREQUENCIES

- Springfield base 133.55
- Christchurch Control 120.9 / 129.3
- Omarama Traffic 119.1

## FLIGHT TRACKING

It is required that all pilots flying cross country, carry a flight following device, such as "Spot".

Springfield Base will provide flight tracking on [tracking.gliding.co.nz/](http://tracking.gliding.co.nz/) Please ensure your flight tracking is working before entering the grid.

If a flight following device fails in flight, the pilot must give position reports at least every 60 minutes.

## EMERGENCY PLAN

Canterbury Gliding Club has a comprehensive Emergency Plan. This Chart is displayed in the Briefing Room and also in Kraak Kontrol.

This Emergency Plan is displayed as a step-by-step action chart.

In addition, all the Emergency phone contacts are displayed here.

You must make yourself familiar with the location of this Emergency Plan.

For the Competition, the first person to contact is:

**Competition Director, Richard Johnson** 027 614 0348



## DEFIBRILLATOR

There is a Defibrillator positioned on the outside western wall of Kraak Kontrol.

## TOWING COSTS

(Cost TBA) recorded in *Glide Time*. *Glide Time* costs will be invoiced at the end of your participation.

## ENTRY FEES

Event entries are to be made via the GNZ website

<https://gliding.net.nz/events/springfield-comp-nov-2022>

**NOTE:** You will pay your Entry fee at the conclusion of the event, together with your daily airfield costs/towing costs/accommodation and catering costs. Make payment then to Canterbury Gliding Club **ANZ 01 811 0011563 02** with your name and Reference "SOARING"

<b>Entry</b>	\$120
<b>Daily</b>	\$30/day
	<b>email:</b> <a href="mailto:rjohnson@cwallp.org.uk">rjohnson@cwallp.org.uk</a> which days you will be flying or you will be assumed to be a full entry.
<b>Youth:</b>	\$ half price

## TRAILER PARKING AND RETRIEVE SET UP

Park trailers in the trailer park area.

if you want CGC to retrieve - place your car keys on the clip board in Kraak Kontrol where your glider and trailer rego is written. Attach your car to the trailer.

Further parking details will be given at Briefing.

## GLIDER TIE DOWN AREA

Competition gliders have priority. Area available against the hedge on the West side of the hangar.

Further details will be given at Briefing.

## CAR PARKING

Once gridded, please park in the car park as per Briefing Instructions. Or attach your car to your trailer.

## EFTPOS / CASH

There is **no EFTPOS** at the Gliding Club. The nearest ATM is at Darfield. Drinks and food will be charged to your Flying Account.

## **INTERNET and COMPUTER, cellphone charging access**

CGC wifi available in Kraak Kontrol or in the Briefing Room. Password; gliding1.

Power points are in Kraak Kontrol, in the Briefing Room and in the house.

## **CATERING**

There will be a separate CATERING MENU document on the Contest tab for breakfast, lunches and dinners or you are welcome to make your own meals in the house kitchen. There is a microwave in Kraak Kontrol and the house kitchen and 2 fridges in the house and additional freezers in the Briefing Room.

Beer and wine will be available.

## **PRIZES**

- Ray Lynskey Memorial Trophy
- Trevor Askin Bronze bird sculpture

## **ACCOMMODATION**

### **1. On the airfield**

- There is a campground, with an amenities block with 2 toilets and 2 showers, limited shared cooking facilities in the CGC house kitchen and a separate fridge/deep freeze for campers' use. Camp fee is \$10/per night/per person. Must be booked in advance. We are unable to provide electricity connections to RV's or caravans as anything more than 1 jug or 1 toaster trips the circuit breaker to all connections. We prefer you to use gas, battery and solar for your camp vehicles. If this is a problem discuss with Kevin.bethwaite@gmail.com
- Bunkroom in the CGC house. Must be booked in advance with sandy.m.yong@gmail.com \$15 per night/per person. Shared kitchen. Toilet, shower. Bring your own bedding/ towels, torch, supplies etc. /triple bdm/6 person bunkroom. Pillows, duvets available on request.
- Go to the Canterbury Gliding Club website to view our onsite accommodation facilities <https://canterburyglidingclub.nz/our-facilities/>

### **2. Off site accommodation**

Lots of choices with:

- airbnb. Nearby is Darfield, further is Oxford.  
[www.airbnb.co.nz/s/Darfield--New-Zealand/](http://www.airbnb.co.nz/s/Darfield--New-Zealand/) [www.airbnb.co.nz/s/Springfield--New-Zealand/](http://www.airbnb.co.nz/s/Springfield--New-Zealand/)
- Or booking.com - for Springfield, Sheffield, Darfield, Oxford Coalgate, Windwhistle, Glentunnel; check out the distances and there are farmstay cottages around.

## THINGS TO DO ON A NON-FLYING DAY.

**Condor Gliding Simulator** in the Briefing Room. Try this.

Pick up one of the great Selwyn District Council pamphlets on where-to-go, what-to-do available in the Briefing Room.

**Wine tasting.** Drive to Waipara (1 hr 15 mins).

Check out these vineyards, maybe phone to check not hosting an event? But plenty of other vineyards anyway. Maybe book for lunch? A wine tour would need to be booked.

- **Waipara Hills** Tastings and restaurant. [waiparahills.co.nz](http://waiparahills.co.nz) SH 1 Waipara. Book tasting on line beforehand.
- **Greystone Vineyard**.. Organic. Tastings and café. [greystonewines.co.nz](http://greystonewines.co.nz)  
376 Omihi Road
- **Black Estate Vineyards.** Restaurant and cellar door. Wed-Sunday.  
[blackestate.co.nz](http://blackestate.co.nz) 614 Omihi Road
- **Torlesse Wines** [torlesse.co.nz](http://torlesse.co.nz) Loffhagen Drive, Waipara.

Cust, Oxford and Rangiora have some great cafes for meals en route.

### **An adventure walk, Cave Stream. D.O.C**

**<https://www.doc.govt.nz/globalassets/documents/parks-and-recreation/places-to-visit/canterbury/waimakariri/cave-stream-brochure.pdf>.**

Less than 30mins from Springfield. [doc.govt.nz/parks-and-recreation/places-togo/canterbury/places/cave-stream-scenic-reserve](http://doc.govt.nz/parks-and-recreation/places-togo/canterbury/places/cave-stream-scenic-reserve). The reserve is on SH73 between the Broken River road bridge and Craigieburn Forest Park entrance. Picnic/café food at Springfield, nowhere else en route or else use Sheffield Pie shop before departing. There are two short walks here, 30 min return each track.

Watch the water level in the cave. It varies and can be quite deep in places. Normally the deepest section (at the first corner from the cave outlet end) is just above waist level on an adult. If the stream is abnormally high, with the water dis-coloured or foaming, do not attempt to enter.

Essential to check above website for gear and safety advice..

**Washpen Falls walk** [www.washpenfalls.co.nz](http://www.washpenfalls.co.nz). \$10 person.

An adventure walk on a high country working farm, near Windwhistle, allow 2hrs, moderate fitness. Lush native bush upto tussock, wildlife reserve, birds. Great views. Take your own picnic to have by lake (Sheffield Pie shop is great).

**Adventure Trail Bikes and Quad bike tours** near Springfield, phone 027 4510 584.

**Alpine Jet Thrills** Canyon boating, [www.alpinethrills.co.nz](http://www.alpinethrills.co.nz) or a Wilderness Safari with walk and a jet boat ride

### **Rubicon Valley Horse Treks**

**Golf** nearby at Glentunnel [www.hororatagolf.co.nz/](http://www.hororatagolf.co.nz/)

**Fishing.** Check with Derek K. for local advice.